

# Tymetal *Company Profile*

---



Tymetal Corp. designs and manufactures the most extensive line of perimeter security gates and accessories for the Commercial/Industrial and the Correctional markets. Security applications in these two markets range from maximum/medium to medium/low security. Regardless of the security application, Tymetal can provide a gate to fit your needs. We specialize in the unusual and we welcome the challenge. When it comes to closing openings, Tymetal is the best, by far.

Engineered solutions to closing openings—that's Tymetal. Being one of the first companies to Manufacture engineered aluminum cantilever slide gates, Tymetal now provides the most complete gate system, including the gate, operator, custom matched hardware and accessories. Tymetal also provides the most complete technical services to assist the architect, designer, installer and owner with design service, drawings and specifications, installation support, project commissioning with extended warranty and maintenance options also available. Since 1985, Tymetal has been the leading resource for all automated gate system needs.

With installations in fifty states and countries around the world, Tymetal is the company to call for your security gate needs. Standard or custom, from cantilever or overhead slide, ornamental picket, and vertical lift gates to crash systems and a full range of gate operators, Tymetal has the solution. Our reputation, earned over many years of superior product performance and customer service, has distinguished Tymetal in all markets where security is a concern.

Whether it is for industrial, port, aviation, transit, military, prison, utility, chemical, rail or municipal/governmental purposes, Tymetal has the complete engineered solution for closing openings.



# Tymetal *Security Gate Solutions*



The premier manufacturer of complete, ready to install industrial and commercial automatic gates systems.

Tymetal offers a diverse line of individually engineered perimeter security products that include:

- Vehicular Access Gates: Cantilever Slide Gates; Swing Gates; Overhead Slide Gates; Vertical Lift Gates; and Bi-Fold Gates.
- Crash Rated Products: Crash Gates, Crash Beams and Crash Bollards.
- Pedestrian Access Gates: High Security, Pre-hung Gates with Customizable Infill, Sizing and Access.





## About Tymetal Security Gate Solutions

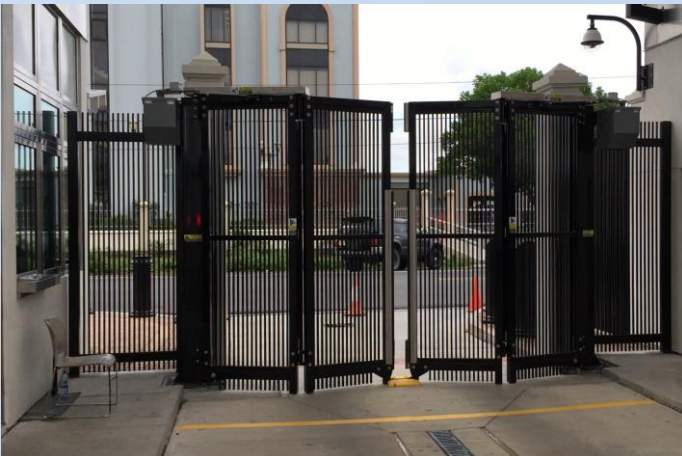
- We engineer, design and manufacture the most extensive line of perimeter vehicle and pedestrian security gate systems for the Commercial/Industrial and Correctional markets.
- The leader in exterior vehicle and pedestrian gate systems with over 35 years experience.
- Installations nationwide and across the globe, including Canada, Mexico, Saudi Arabia, South Korea, Saipan and Singapore. Along with United States embassies around the world.





## Why Choose Tymetal?

- Tymetal Gate systems are the most cost advantageous gate systems in today's Correctional and Commercial/Industrial markets.
- One of the most critical cost saving aspects of the Tymetal product line is the operational longevity of our engineered gate and bollard systems.
- Tymetal products are manufactured under a controlled environment that results in high performance systems requiring low maintenance.



# Security Gate Solutions



## Market Segments

- **Correctional Market** – Detention grade locking systems for correction vehicle and pedestrian gate applications.
- **Commercial/Industrial Market** – Gate and operator needs for all commercial applications.
- **Vehicle Crash Gate & Bollard Market**– utilized for government, utility and all high security applications
- **Engineering and Technical Services Support** – All market segments



## Benefits of Tymetal

- Years of industry experience with the highest quality standards in the business.
- Complimentary design services including CAD drawings and specifications.
- Security at the forefront of every design
- Fully staffed service department to guide and assist with any questions, before, during and after installation.



# Tymetal *Cantilever Gates*



## Heavy Duty Cantilever

- Up to 30' single opening
- 60' Bi-parting
- Single Track Design
- Infill Independent



## Structural Cantilever

- Up to 40' single opening
- 80' Bi-parting
- Double Track Design
- Infill Independent



# Tymetal *Cantilever Gates*

## Box Frame Slide Gate

- Up to 60' single opening
- 120' Bi-parting
- Infill Independent



## HD Overhead Slide Gate

- Up to 40' opening
- Infill Independent



# Tymetal *Swing Gates*



## Swing Gates

- Up to 24' single
- 80' Double Swing
- Chain Link
- Ornamental
- Custom Gates Available





# Tymetal *Rolling Gates*



## Box Frame Roller

- Up to 500' single opening
- 1000' Bi-parting
- Infill Independent

## Telescoping Box Frame

- Up to 40' Single Opening
- 50%-60% Less Space
- Infill Independent



# Tymetal *Vertical Lift Gates*



## Vertical Lift Gate

- Up to 60' Single Opening
- Limited Space
- Chain Link or Ornamental



## Vertical Pivot Gate

- Up to 24' Single Opening
- Limited Space
- Infill Independent



# Tymetal *Pedestrian Gates*

## 2150 Pedestrian Swing Gate

- Fully Assembled & Easy to Install
- Infill Independent
- Various Options
- Vandal Proof



## Pedestrian Portals

- Infill Independent
- Entry & Exit Control
- Manual & Electronic
- Various Finishes Available





# Tymetal *Bi-Folding Gates*

## SecurFold

- Up to 20' Opening
- Entry & Exit Control
- Trackless or Track
- Various Panel Options Available



# Tymetal *TCG-4 Crash Gates*



## TCG-4

- K4/M30 Certified
- Aluminium Cantilever
- Up to 30' Opening
- Up to 16' High
- Infill Independent
- Systems Package



# Tymetal *TCG-12 Crash Gates*

## TCG-12 Crash Gate

- Steel Cantilever Gate
- K12/M50 - Certified
- 12'-28' Openings
- Operated or Manual
- 8' High (Typical)





# Tymetal *TCGR-12 Crash Gates*



## TCGR-12 Crash Gate

- K12/M50 - Certified
- Aluminium Box Frame Cantilever
- Up to 30' Opening
- Up to 20' High
- Infill Independent
- Operated or Manual





## Tymetal *Crash Beams*



### TCRB-4 Crash Beam

- M30 P1 - Certified
- Hydraulic, Manual, Electro-Mechanical
- Up to 22' Opening

### TCRB-12 Crash Beam

- M50 P1 - Certified
- Hydraulic, Manual, Electro-Mechanical
- Up to 22' Opening





# Tymetal *Bollards*



## Crash Bollards

- Range from the Car Stopper (TSB-Car), designed to stop a 3,306 lb. car traveling at 30 mph to the Truck Stopper series that can stop a 16,534 lb. truck traveling at up to 50 mph

ONE Company. ONE Contact.

800-328-4283

[www.tymetal.com](http://www.tymetal.com)

